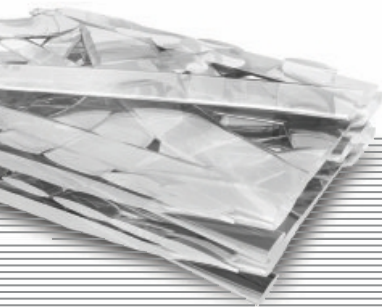


# Q-FIRE

## Composite

**MODEL : QF 1000**



Made of  
composite fiberglass



Standard colors:

-  red
-  yellow - green \*
-  yellow - orange
-  yellow
-  white

\* optional photo luminescence



Ready to use with a mask



Optional dark visor



Optional lamp integration

# Q-FIRE

## Composite

MODEL : QF 1000



We are introducing the firefighter helmet of tomorrow. It is designed to protect the head in the most extreme conditions. Development and implementation of new composite technology in combination with established design enable full protection even at shorter (flash over flames) temperature exposures, reaching up to 1000 °C. These advantages are rounded up with extreme lightweight (1.300 g) and such design that supports a wide selection of compatible accessories. Structural firefighting has never been safer.



*Highest temperature resistance and ultimate protection against mechanical impacts is enabled using composite fiber technology.*

### Key features:

- Lightweight of only 1.300 g (including visor face shield and neck protector)
- Extreme temperature resistance (up to 1.000 °C) in a 10 seconds flash over flames
- Long-term resistance to 250°C / 30 min, radiant heat test 14 KW / m<sup>2</sup>
- More resistant to mechanical impacts than any standard helmet
- Latest European standards conformity (EN 443/2008)
- Full head protection, including neck and face
- Double Visor, PES anti-scratch and anti-fog coated visor resistible to up to 300 °C (EN 14458)
- Aluminized carbon-fibre neck protection
- Interior shock absorber made of polyurethane foam
- Integrated adjustment system (ranging from 52 - 63cm) / Turn Lock Fasteners
- Interior ventilating channels enable safe and comfortable work
- Luminescent and reflective tapes visible from all sides and in all conditions
- Nomex chinstrap - tested to prevent skin irritations



*Adjustment system with triangle connections and a quick release button.*



Flip down face visor



Removable aluminized carbon-fibre neck protector



Optional accessories