



Fire Sprinkler Hanging & Bracing Products

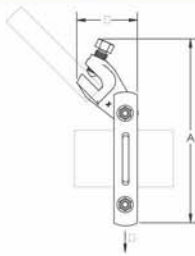


AUTHORIZED DISTRIBUTOR AND SERVICE CENTER :
PT. SABERINDO PACIFIC
 Kompleks Mega Grosir Cempaka Mas, Blok J No. 10 Jl. Letjend. Suprpto
 Jakarta 10640, Jakarta - Indonesia
 Telp : +62 21 4288 8282 (Hunting) | Fax : +62 21 4287 2323
 Website : www.saberindo.co.id | Email : info@saberindo.co.id



The specifications and designs of the products are subject to change without prior notice for the purpose of improvement of the products

Standard Universal Sway Brace



Material: Steel

- Use for both lateral and longitudinal sway brace applications
- Snap-off bolt head helps enable easy installation and inspection of seismic sway braces
- Works with 1" through 2" brace pipes and 1/4" angle iron braces to reduce inventory
- Slotted design grabs service pipe for added gripping strength
- Meets NFPA®-13 requirements for seismic sway bracing



Part Number	Pipe Size	A	B	Certifications
Finish: Electrogalvanized / Hot-Dip Galvanized				
CSBSTU0100EG / CSBSTU0100HD	1"	6 7/8"	1"	FM, UL
CSBSTU0125EG / CSBSTU0125HD	1 1/4"	7 3/8"	1"	FM, UL
CSBSTU0150EG / CSBSTU0150HD	1 1/2"	7 3/4"	1"	FM, UL
CSBSTU0200EG / CSBSTU0200HD	2"	8 1/8"	1 3/16"	FM, UL
CSBSTU0250EG / CSBSTU0250HD	2 1/2"	8 7/8"	1 3/16"	cULus, FM
CSBSTU0300EG / CSBSTU0300HD	3"	9 3/8"	1 3/16"	cULus, FM
CSBSTU0400EG / CSBSTU0400HD	4"	10 5/8"	1 1/2"	cULus, FM
CSBSTU0500EG / CSBSTU0500HD	5"	12 1/8"	1 1/2"	cULus, FM
CSBSTU0600EG / CSBSTU0600HD	6"	13 5/8"	2"	cULus, FM
CSBSTU0800EG / CSBSTU0800HD	8"	15 3/4"	2"	cULus, FM
CSBSTU1000EG / CSBSTU1000HD	10"	18"	2"	cULus, FM

UL Loads (Listed for Restraints)

Part Number	Dyna-Flow® Service Pipe	Sch 10 Service Pipe	Sch 40 Service Pipe
CSBSTU0100xx	N/A	655 lb	655 lb
CSBSTU0125xx	655 lb	655 lb	655 lb
CSBSTU0150xx	655 lb	655 lb	655 lb

UL Loads (Listed for Sway Braces)								
Part Number	Lateral				Longitudinal			
	Dyna-Flow® Service Pipe	EZ FLOW™ Service Pipe	Sch 10 Service Pipe	Sch 40 Service Pipe	Dyna-Flow® Service Pipe	EZ FLOW™ Service Pipe	Sch 10 Service Pipe	Sch 40 Service Pipe
CSBSTU0200xx	3,000 lb	N/A	3,000 lb	3,000 lb	N/A	N/A	N/A	N/A
CSBSTU0250xx	3,000 lb	N/A	3,000 lb	3,000 lb	2,015 lb	N/A	2,015 lb	2,015 lb
CSBSTU0300xx	3,000 lb	N/A	3,000 lb	3,000 lb	2,015 lb	N/A	2,015 lb	2,015 lb
CSBSTU0400xx	3,000 lb	3,000 lb	3,000 lb	3,000 lb	2,015 lb	N/A	2,015 lb	2,015 lb
CSBSTU0500xx	N/A	3,000 lb	3,000 lb	3,000 lb	N/A	N/A	2,015 lb	2,015 lb
CSBSTU0600xx	N/A	3,000 lb	3,000 lb	3,000 lb	N/A	2,015 lb	2,015 lb	2,015 lb
CSBSTU0800xx	N/A	N/A	3,000 lb	3,000 lb	N/A	N/A	2,015 lb	2,015 lb
CSBSTU1000xx	N/A	N/A	3,000 lb	3,000 lb	N/A	N/A	3,000 lb	3,000 lb

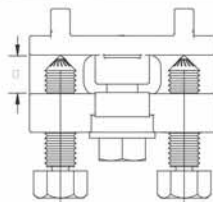
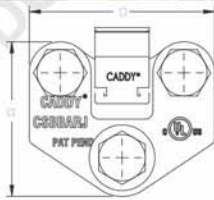
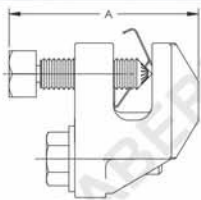
FM Loads (0.188" wall and Sch 40 Service Pipes)								
Part Number	Horizontal Capacity per Installation Angle from Vertical							
	Lateral				Longitudinal			
	30° - 44°	45° - 59°	60° - 74°	75° - 90°	30° - 44°	45° - 59°	60° - 74°	75° - 90°
CSBSTU0800xx	2,040 lb	2,890 lb	3,540 lb	3,950 lb	1,200 lb	1,700 lb	2,090 lb	2,330 lb
CSBSTU1000xx	2,040 lb	2,890 lb	3,540 lb	3,950 lb	1,200 lb	1,700 lb	2,090 lb	2,330 lb

FM Loads (Lightwall, Sch 10 and Sch 40 Service Pipes)								
Part Number	Horizontal Capacity per Installation Angle from Vertical							
	Lateral				Longitudinal			
	30° - 44°	45° - 59°	60° - 74°	75° - 90°	30° - 44°	45° - 59°	60° - 74°	75° - 90°
CSBSTU0100xx	860 lb	1,220 lb	1,500 lb	1,670 lb	970 lb	720 lb	860 lb	960 lb
CSBSTU0125xx	860 lb	1,220 lb	1,500 lb	1,670 lb	970 lb	720 lb	860 lb	960 lb
CSBSTU0150xx	860 lb	1,220 lb	1,500 lb	1,670 lb	970 lb	720 lb	860 lb	960 lb
CSBSTU0200xx	1,530 lb	2,160 lb	2,650 lb	2,960 lb	870 lb	690 lb	830 lb	930 lb
CSBSTU0250xx	1,530 lb	2,160 lb	2,650 lb	2,960 lb	870 lb	690 lb	830 lb	930 lb
CSBSTU0300xx	1,530 lb	2,160 lb	2,650 lb	2,960 lb	870 lb	690 lb	830 lb	930 lb
CSBSTU0400xx	1,570 lb	2,220 lb	2,720 lb	3,030 lb	1,550 lb	1,390 lb	1,680 lb	1,870 lb
CSBSTU0500xx	1,570 lb	2,220 lb	2,720 lb	3,030 lb	1,550 lb	1,390 lb	1,680 lb	1,870 lb
CSBSTU0600xx	1,980 lb	2,810 lb	3,440 lb	3,840 lb	1,470 lb	1,170 lb	1,410 lb	1,570 lb

Bar Joist Attachment



- Can be installed on bar joists or I-beams
- Thumb spring retainer allows for ease of positioning
- Snap-off bolt head helps enable easy installation and inspection of seismic sway braces
- No assembly required
- No loose parts
- Meets NFPA®-13 requirements for seismic sway bracing



Material: Steel

Part Number	Finish	Flange Thickness FT	A	B	C
CSBBARJEG	Electrogalvanized	1/4" - 1/2"	2"	3"	2 1/2"
CSBBARJHD	Hot-Dip Galvanized	1/4" - 1/2"	2"	3"	2 1/2"

UL Loads		
Brace Direction to Structure	Service Pipe Size	Rating
Parallel	1" - 10"	3,000 lb
Perpendicular	1" - 12"	3,740 lb

FM Loads					
Brace Direction to Structure	Service Pipe Size	Horizontal Capacity per Installation Angle from Vertical			
		30° - 44°	45° - 59°	60° - 74°	75° - 90°
Parallel	N/A	1,410 lb	2,110 lb	2,540 lb	2,830 lb
Perpendicular	N/A	1,740 lb	1,710 lb	2,060 lb	2,300 lb