

Hose Recovery Unit HRU 300



Description

The FFS Hose Recovery Unit HRU 300 (HRU) is designed for lifting high volume transfer hose into a storage container or hose pod under heavy duty conditions.

The hydraulically powered HRU makes the retrieval of hoses up to 12" diameter easy and safe after fire fighting operations.

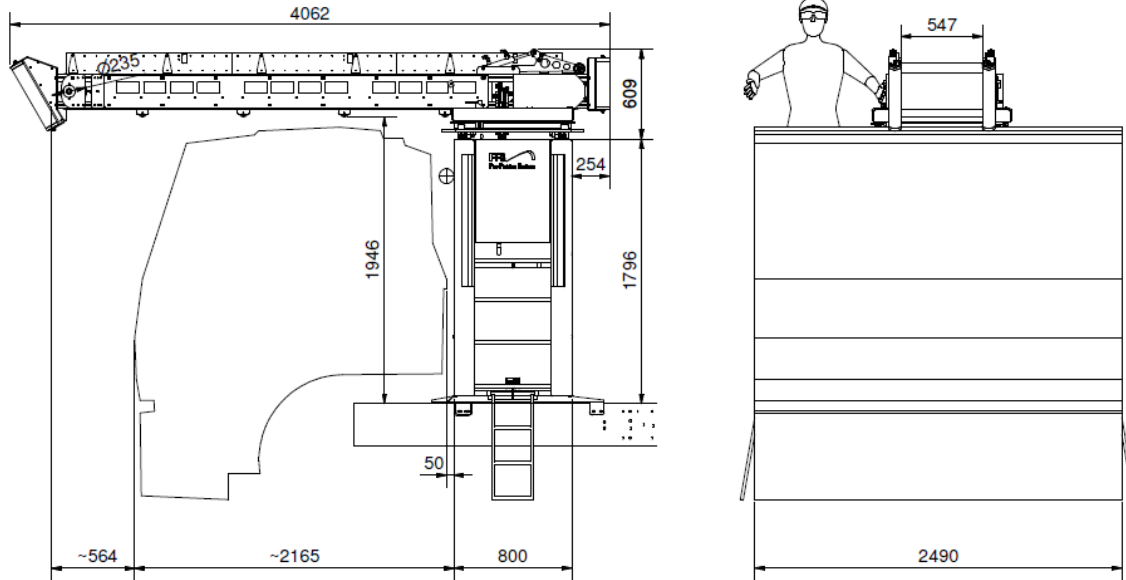
The HRU is mounted on a turret which can rotate for hose recovery from each side of a truck cabin or in line with the truck over the cab. The unit can also be turned straight backwards for stowage during transport. The turret moves on rails for transverse positioning to the individual hose compartments by hand operated trapezoidal screw. This design also includes locking device for secure and fixed positioning.

Access to the operator locations is possible from each side of the truck, with integrated pull-out ladders for easy entrance with rigid steps integrated in the HRU Base. The Base serves as a safe operating platform, ensuring full control and optimal overview of the process. Side doors to the operator platform which fold inwards ensure additional safety for the operator.

The HRU is powered by an integrated engine which generate hydraulic power to hydraulic motor and cylinders. The engine is easy accessible through hatch covers from operator platform, its compartment also serves as a storage room.

Operation of the HRU is possible from both sides depending of the selected position of the HRU to the relevant hose compartment in the container or hose pod. Emergency stop button for the unit is centrally located and easily accessible.

Hose Recovery Unit HRU 300



Performance Data

Type	HRU 300
Hose diameter	Up to 12" or DN300
Rotation	+/- 180°
Weight, total	1200 kg
Belt length from base	2,7 m
Pull force limited to	100 kg
HPU engine type	6hp 4 stroke petrol engine
Start/throttle method	Recoil start, manual throttle
Hyd. capacity	20l/min@95bar-12l/ min@160bar
HPU weight	Approx. 42kg
Fuel tank capacity	4l
Operation of hydraulics	Manual by levers
Operation of turret	Manual by handles and hand crank

Key Features

- All-in-one package
- Safe operation platform from best overview
- Anti slip platform
- Easy access to all control parts
- Hydraulic Powered Recovery Unit
- Can operate independently
- Hydraulic movement locking in control release
- Emergency stop button for HPU

Other Characteristics

- Standard coating RAL 3002 red 175µ epoxy base, polyurethane top
- Adaptor bracket for vehicle chassis

Options

Adaptation to different vehicles