



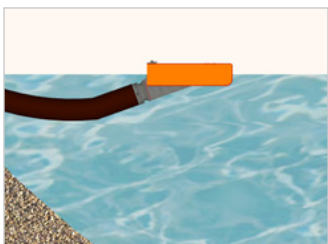
SELF-LEVELING FLOAT DOCK STRAINER

The Float Dock® Strainer is a valuable piece of equipment that can save the day in many firefighting situations. Float Dock® lets you use the water in farm ponds or streams, both shallow and deep, and with a FOL-DA-TANK. Because it operates below scum and debris and above sand and muck, it screens out the materials that wear out impellers, packing and bearings. Since Float Dock® strainers are self-leveling, there are no whirlpools or suction loss. Each unit is fully guaranteed. (NFPA 1142 compliant)

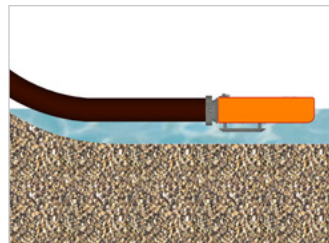
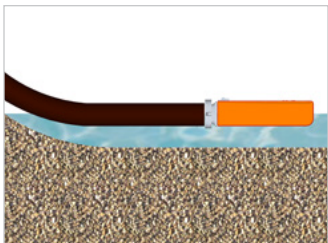
FEATURES

- Professionally designed and engineered for maximum pumping capacity
- Polyethylene molded float with molded in carry handle (handle can be used for tie-off and retrieval)
- No need for a vortex plate, float prevents any whirlpooling
- Self-leveling
- Al-mag castings - Proven to be the toughest in the industry
- Long handle swivels with standard NH or NPSH threads
- 20-30% more open area at the intake
- Detach strainer and use separately as a "Box Strainer"
- All Float Dock® are available in all aluminum construction up to 8"
- Float Dock® drafts in as little as 5"/13 cm of water
- Optional riser will convert the strainer box into a low-level strainer
- 6" is recommended for pump rated at 1500-2000 GPM

Part No.	Float Only Dimensions in/mm	Strainer Only Dimensions in/mm	Weight lb/kg
FDS 2.5	5"x15"x18"/130x380x470	4"x6"x14"/100x150x360	16/7
FDS 3.0	5"x15"x18"/130x380x470	4"x6"x14"/100x150x360	16/7
FDS 4.0	7"x21"x26"/180x530x670	7"x8"x15"/180x250x470	13/14
FDS 4.5	7"x21"x26"/180x530x670	7"x8"x15"/180x250x470	32/15
FDS 5.0	7"x21"x26"/180x530x670	7"x8"x15"/180x250x470	32/15
FDS 6.0	7"x21"x26"/180x530x670	7"x8"x15"/180x250x470	33/15
FDS 8.0	All Aluminum Pontoon Style		



DEEP DRAFT - Strainer drafts from a few inches below surface where water is cleanest. Note how hose weight tilts strainer position while float remains level. *Right photo*



SHALLOW DRAFT - Note how Float Dock drafts in as little as 5"/130mm depth without any whirlpooling or loss of suction. *Right photo shown with riser*

STRAINER WITH RISER

- Floating strainer
- Low-level strainer
- Box strainer

Part No. FDSR

